

THE GUERNSEY ICE CREAM ROUTE MAP

ENJOY SOME OF THE TASTIEST WALKING ROUTES IN GUERNSEY

Make the most of our enchanting island, discover fascinating landmarks, sun yourself on golden beaches, descend breathtaking cliff scenery, take a pit stop at one of our many family run and friendly beach kiosks and enjoy the delicious taste of authentic Guernsey Dairy ice cream.



LIBERATE YOUR TASTE BUDS

GENUINE GUERNSEY ICE CREAM



guernseydairy.com



Route 1. Forts of the North

Vale Castle to L'Ancrese Bay (2 hours)

Journey through Guernsey's intriguing military past (since 600BC) starting at Vale Castle. Used for military intent until World War II, the castle was built in 1370 during the English Civil War.

The threat of invasion during the American War of Independence from 1778-1783 prompted the castle's repair and the building of barracks and garrison. During World War I the local militia had a small garrison and during the second world war, German forces demolished the barracks during their occupation.

You can enjoy refreshments at Woodies shortly after the Castle.

Moving northwest you will soon come across the beautiful traditional fishing harbour at Bordeaux. Just off the bay are the Houmets Paradis islets, mentioned by Victor Hugo who described Les Houmets, in his work The Toilers of the Sea.

Moving around Bordeaux on the coast path and through a patchwork of lanes you will arrive at Beaucette Marina where you can enjoy some food and refreshments. Beaucette was once a quarry; in the 19th century, quarrying was Guernsey's major industry with 268 active quarries on the island.



The quarry at Beaucette became disused and an enterprising company employed the services of the Royal Engineers (with Ministry of Defence permission) to demolish a gap between the quarry and the sea to create a tidal harbour.

Beyond the marina, the Beaucette Battery is located at the northeastern tip of the island. Walk the coastal path to Fort Le Marchant, a great place for youngsters to explore. There has been a fort here since 1680. On approaching Fort Le Marchant you see five large, numbered boards used by the rifle range. NB Look out for the colour of the flag that is flying, a red flag indicates the range is in use and the area is prohibited so you will need to walk around the Fort.

Soon you will be at the beautiful L'Ancrese and Pembroke Bays, which share an arching beach of golden sands. Here there are two quaint kiosks. The charming L'Ancrese Bay Kiosk offers a range of homemade and locally produced food. Here's your first chance to try some delicious Guernsey Dairy ice cream as well as Guernsey beef burgers (made to order), Malay curries, amazing cakes and of course the most sumptuous crab sandwiches. At the other end of the bay is Pembroke Bay Kiosk selling hot and cold foods, drinks, ice creams and many essential beach accessories. In the middle of the bay is The Beach House which also serves Guernsey Dairy ice cream and an extensive food menu.

Route 2. Dolmens, monks and Martello towers

Chouet to Grand Havre (1 hour)

Further along the west coast you'll find the adjoining bays of Ladies Bay and Chouet which offer soft white sand, crystal-clear water, rock climbing, rock pooling and an excellent beach kiosk, 'Woodies' making it great for families. Start your walk from Chouet car park and make your way parallel to the links golf course around the coast towards Vale Church.

Behind these bays is the L'Ancrese Common where you will discover La Varde Dolmen. This is one of the most impressive megalithic structures on Guernsey (4000 to 2500 BC). Nearby you will find the Millennium Stone, which was erected in 1999. You will also find World War II fortifications dotted around the common along with Martello (Loophole) Towers. There are 15 on Guernsey built between 1778 and 1779 to protect some of the island's most vulnerable beaches from potential invasion.

After the common, look for the spire of Vale Church, built when Guernsey was evangelised (6th Century). Within the church some Roman bricks have been reused and around 968AD the monks from Mont St Michel founded a priory.

Shortly after Vale Church, curve around Grand Harve and Vale Pond, the last remaining evidence that Guernsey was once two islands, parted by a saltwater channel. The Vale Pond is breeding habitat for bird-life, including snipe, heron and little egrets, and has a public viewing hide. Opposite the pond is the lovely Grand Havre beach and L'Islet Kiosk. A local family run kiosk, selling lots of hot and cold food, excellent Barista style coffees and Guernsey Dairy ice cream.



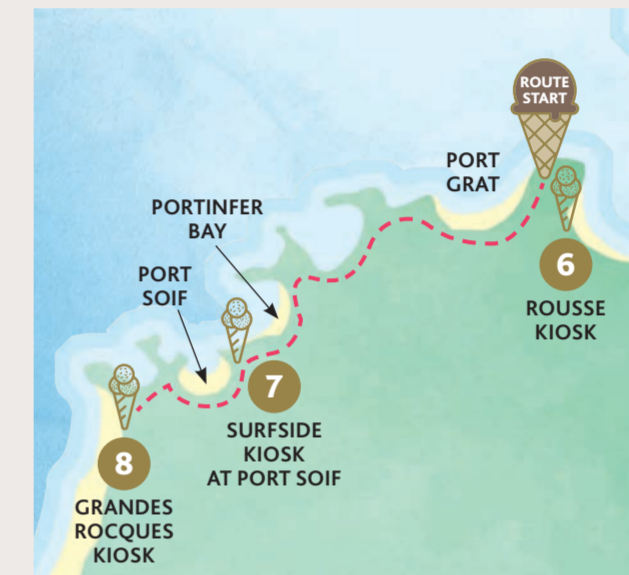
Route 3. From pier jumping, white sandy beaches to surf breaking

Rousse to Port Soif (1 1/2 hours)

At Rouse Headland you'll start your walk at the impressive loophole tower, which was originally built to defend the island against the threat of a French invasion. The tower is a great place for kids to play. Adjacent to the tower is the large Rouse pier where, as the tide rises, you can jump into the warm waters of the bay. Rouse Kiosk overlooks the pier so make the most of mouth-watering cakes, hot food, and a friendly smile from this family run favourite.

From Rouse head southwest towards Port Grat, a horseshoe bay with its stunning white sand and clear waters. Continue along the path around the Pasee and onto surfers paradise at Portinifer where you'll stumble across Surfside Kiosk at Port Soif. A beautiful take-away beach café and tea garden. Here you can enjoy great coffee and freshly made scones served with some delicious Guernsey cream. They also offer fresh sandwiches, cakes, Guernsey Gache, ice creams, salads, and daily specials.

Continue around the pink granite coastline to the sun kissed white sand at Grandes Rocques. The kiosk here is archetypal Guernsey with everything you need for your day at the beach. This friendly kiosk sells a range of refreshments including ice creams, hot food, fresh Guernsey Gache and of course Guernsey Dairy ice cream. There are outdoor benches where you can enjoy your food and drink, or you can opt to sit on the sandy beach just metres away.



Route 4. Beach lover's paradise and pine forests

Cobo to Vazon (1 hour)

Start at one of Guernsey's livelier beaches. Cobo Bay is quintessentially Guernsey with a slightly Caribbean feel. Stunning soft white sand and warm blue waters lap this picturesque bay. Have a dip and enjoy a bite and refreshments at Mim's Kiosk at Cobo which offers a wide range of hot food including an artisan pop-up pizza parlour. They go out of their way to use local suppliers and, in true Guernsey fashion, get their veg from the hedge.

Shortly opposite Mim's you'll discover Le Guet Pine Forest – a collection of century old Monterey pine trees ascending the hill. Continue along the coastal path and head west to Vazon. On its headland is Fort Hommet Gun Casemate Bunker. Here you will find a fully restored gun that was constructed by the occupying German forces between 1940 and 1945. This casemate is one of 21 'Fortress' bunkers built in Guernsey. At a low tide it is surrounded by rocks and heathland between the fortress and the mainland, which is why the name is derived from the Guernesiais word 'houmet', meaning peninsula. It is open for visits on Saturday afternoons throughout the summer.

Descending down from the Fort you'll see the sweeping surfer, paddleboarding, foiling and windsurfers' paradise of Vazon Bay. There's a surf school and Vistas Beach Café, which, has an extensive food menu, ice creams and cold beers. Popular with families, cyclists, dog walkers and surfers.

Fully refreshed, keep walking along the coastal defences towards Richmond and you will come across another gem. Richmond Kiosk is a very popular stop for locals selling hot and cold food overlooking the beach. There is a wide selection of food on offer from burgers and speciality currywurst und pommes, Guernsey Bean Jar and fresh crab served in delicious Senners Rolls, to Guernsey ice cream and homemade cakes.



Route 6. Cliff paths, hidden coves and stunning bays

The South Coast Cliffs (4-5 hours)

For those adventurous types the south coast cliff path from Pleinmont to Town is truly breathtaking passing so many points of interest. But, be warned, it is 28 km of challenging undulation. However, you can stop and park, if preferred, at a number of car parks along this coastline.

Not far from Guernsey's Airport is Petit Bot Bay, a sheltered cove with plenty of rock pools to explore at low tide. The Petit Bot Tea Room is a staple of Guernsey's kiosk heritage serving drinks, snacks and ice creams with outdoor seating in its sunny courtyard with views down the slipway and onto the bay.

Head to Icart Point for spectacular views across Moulin Huet and Jerbourg, just around the corner.

Saints Bay is a lovely spot with a small harbour anchoring little fishing boats within a sheltered cove. At the bottom of the steep cliff path you'll discover Saints Bay Kiosk which has a liquor license and serves lovely home cooked food from this taverner style kiosk. The kiosk sits just up from the bay, accessed either by walking down a steep lane from St Martin's, along the cliff paths or if you have a boat you can moor in the bay and row ashore.

Moulin Huet Bay is the next stop along the south coast. Nestled at the foot of the stunning south coast cliffs in St Martins. With crystal clear water, the renaissance painter, Pierre-Auguste Renoir, fell in love with this secluded cove during a visit in 1883. The Renoir Tea Garden is just a stone's throw away from Renoir's famous viewpoints where he painted the Pea Stacks. This idyllic kiosk serves local delicacies such as Guernsey crab, crusty sourdough sandwiches and delicious jam-jarred salads and of course Guernsey ice cream and other desserts. Unwind and channel your inner artist as you look through the picture frames along the Renoir Walk.

Further along the south coast there is the stunning Petit Port Bay, which is certainly not a beach for fainthearted – the only land access is down over 270 steep steps which are challenging. These lead to an idyllic, sandy, secluded bay with breathtaking scenery. You'll soon realise that this beach is every bit worth the effort. Back on the cliff path you head towards Jerbourg Point, the most south-easterly point on our island. On a clear day savour views across the neighbouring islands while enjoying a delicious Guernsey ice cream from Jerbourg Kiosk. This kiosk also has a full range of milkshakes and ice creams as well as hot and cold food.

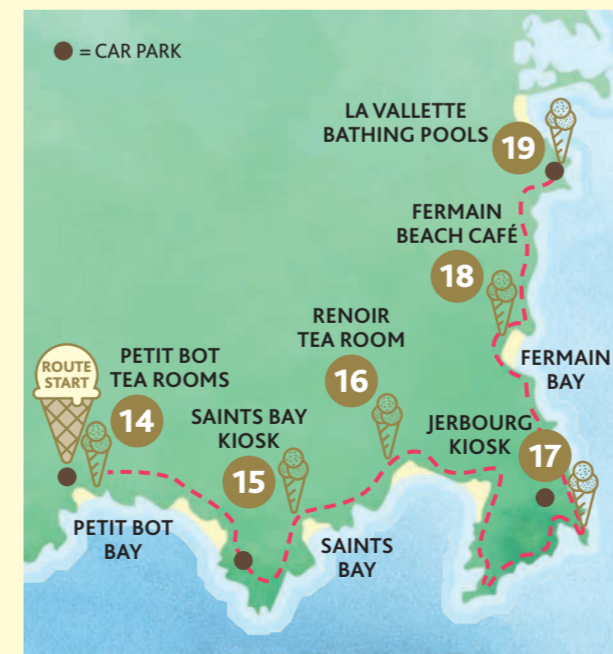
The route north from Jerbourg to Marble Bay – a hilly walk but well worth taking as arguably one of the most beautiful on the

island. There are plenty of steps to contend with but the views out to sea are hard to beat not to mention the woodland which in Spring presents beautiful carpets of bluebells.

Continue along the cliff path and you will come across Fermain Bay. This is one of the most beautiful tucked-away beaches and cafés in Guernsey. This pebbled bay is hidden on the rugged east coast and is a lovely walk from either Jerbourg or St Peter Port along the cliff path. The inviting crystal-clear waters beyond the beach are delightful to swim in, and the Fermain Beach Café is a fabulous place to sit and relax with your friends whilst enjoying a Guernsey ice cream and many other treats.

Continuing towards St Peter Port you will stumble across the beautifully restored sea pools at La Vallette – known locally as the 'Bathing Pools'. Since 1865, these pools have offered a safe and contained area for salt-water swimming, suitable for the whole family. In its earlier years, the pools were often visited by many people of great significance, including legendary 'Les Misérables' writer Victor Hugo and famous Renaissance painter Pierre-Auguste Renoir.

The Bathing Pools have been recently rejuvenated providing a welcoming venue to support health and wellbeing, educational opportunities, a love of our environment and a year-round, indoor café that boasts beautiful views across Castle Cornet and Guernsey's neighbouring islands Herm, Jethou, Brecqhou and Sark. The pools' facilities also include changing rooms, hot showers, a panoramic sun terrace and event space.



Route 7. Guernsey's historical and maritime treasure trove

(1 hour)

St Peter Port is arguably one of the prettiest harbours in Europe and there are many walks to enjoy. From the bus terminus on the South Esplanade you can walk past our fishing quay towards Castle Cornet to enjoy watching harbour activities from Fishy Tales Kiosk next to the Guernsey Yacht Club. Fishy Tales is a favourite kiosk with our harbour community from rowers, yachtsmen, fisherman and visitors.

The owner named this unimposing kiosk back in the 70s when it was packed with fishermen telling yarns, smoking and drinking hot cups of tea. Its most popular requests are for Guernsey Dairy ice cream as well as a slice of buttered Guernsey Gache, a scone and of course a cup of tea or coffee.

Castle Cornet has guarded St Peter Port harbour for 800 years. It houses fascinating maritime and military history museums and from here you can explore the battlements and enjoy breath-taking views towards the other islands.

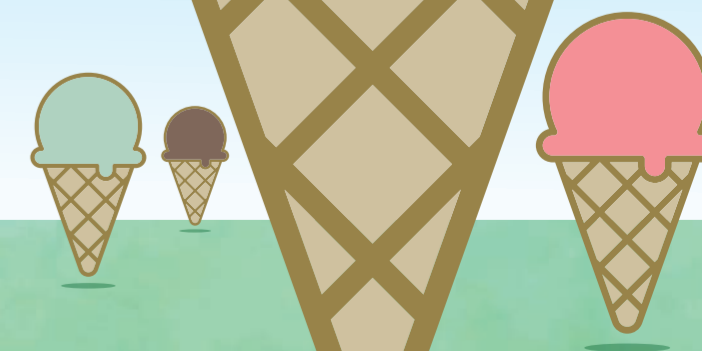
Getting around:

For the latest bus routes visit buses.gg.



THE GUERNSEY ICE CREAM ROUTE MAP

ENJOY SOME OF THE TASTIEST WALKING ROUTES IN GUERNSEY



www.guernseydairy.com



THE GUERNSEY ICE CREAM ROUTE MAP

ENJOY SOME OF THE TASTIEST WALKING ROUTES IN GUERNSEY

COASTAL KIOSKS & CAFÉS

- 1 Woodies at Bordeaux
- 2 L'Anresse Bay Kiosk
- 3 Pembroke Bay Kiosk
- 4 Woodies at Chouet
- 5 L'Islet Kiosk
- 6 Rousse Kiosk
- 7 Surfside at Port Soif
- 8 Grandes Rocques Kiosk
- 9 Mim's Kiosk at Cobo
- 10 Vistas Beach Café
- 11 Richmond Kiosk
- 12 Guernsey Pearl
- 13 Portelet Kiosk
- 14 Petit Bot Tea Room
- 15 Saints Bay Kiosk
- 16 Renoir Tea Garden
- 17 Jerbourg Kiosk
- 18 Fermain Beach Café
- 19 La Vallette Bathing Pools
- 20 Fishy Tales Kiosk

FOR ONLINE VERSION
SCAN QR CODE



REMEMBER TO PICK UP YOUR LOYALTY CARD AT PARTICIPATING OUTLETS



www.guernseydairy.com

